



SMD Power Inductors MTPO Series

Features

- * High energy storage capacity and low DCR
- * Ferrite bobbin core and low profile, small size
- * High heat resistance, ideal for re-flow soldering
- * High reliability

Applications

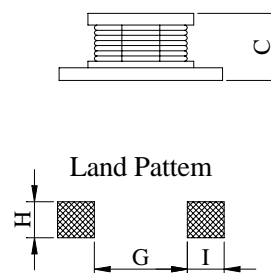
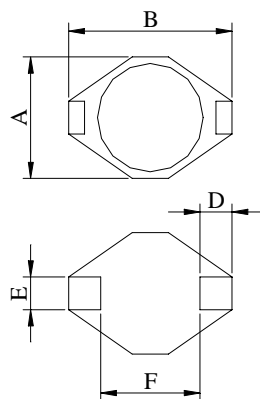
- * Portable communication equipment
- * Notebook PC, digital camera, LCD television set
- * Power supply for VTR, OA equipment
- * DC / DC converters

Product Identifications

MTPO □□□□ - □□□ □
(1) (2) (3) (4)

- (1) Type
- (2) Dimensions
- (3) Inductance
- (4) Tolerance

Shapes and Dimensions





SMD Power Inductors

MTPO Series

Part number	A	B	C	D	E	F	G	H	I	Figure
MTPO 1608	4.45MAX	6.60MAX	2.92MAX	1.02	1.27	4.32	4.06	3.56	1.40	1
MTPO 1608S	4.45MAX	6.60MAX	2.92MAX	1.02	1.27	4.32	4.06	3.56	1.40	2
MTPO 3308	9.5MAX	13.0MAX	3.00MAX	2.54	2.54	7.62	7.37	2.79	2.92	1
MTPO 3316	9.5MAX	13.0MAX	5.20MAX	2.54	2.54	7.62	7.37	2.79	2.92	1
MTPO 3316S	9.5MAX	13.0MAX	5.10MAX	2.54	2.54	7.62	7.37	2.79	2.92	2
MTPO 3340	9.5MAX	13.0MAX	11.5MAX	2.54	2.54	7.62	7.37	2.79	2.92	1
MTPO 5022	15.3MAX	18.6MAX	7.10MAX	2.54	2.54	12.70	12.45	2.79	2.92	1
MTPO 5022S	15.3MAX	18.6MAX	7.60MAX	2.54	2.54	12.70	12.45	2.79	2.92	2

Electrical Characteristics

MTPO 1608

Part number	Inductance (μ H)	Test Frequency	DC Resistance (Ω) MAX.	Rated Current (A) MAX.
MTPO1608-1R0□	1.0 \pm 20%	100KHz	0.05	2.90
MTPO1608-1R5□	1.5 \pm 20%	100KHz	0.05	2.80
MTPO1608-2R2□	2.2 \pm 20%	100KHz	0.07	2.40
MTPO1608-3R3□	3.3 \pm 20%	100KHz	0.08	2.00
MTPO1608-4R7□	4.7 \pm 20%	100KHz	0.09	1.50
MTPO1608-6R8□	6.8 \pm 20%	100KHz	0.13	1.40
MTPO1608-100□	10 \pm 20%	100KHz	0.16	1.10
MTPO1608-150□	15 \pm 20%	100KHz	0.23	1.00
MTPO1608-220□	22 \pm 20%	100KHz	0.37	0.80
MTPO1608-330□	33 \pm 20%	100KHz	0.51	0.60
MTPO1608-470□	47 \pm 20%	100KHz	0.64	0.50
MTPO1608-680□	68 \pm 20%	100KHz	0.86	0.40
MTPO1608-820□	82 \pm 20%	100KHz	1.08	0.35
MTPO1608-101□	100 \pm 20%	100KHz	1.27	0.30
MTPO1608-151□	150 \pm 20%	100KHz	2.00	0.25
MTPO1608-221□	220 \pm 20%	100KHz	2.65	0.20
MTPO1608-331□	330 \pm 20%	100KHz	3.80	0.16
MTPO1608-471□	470 \pm 20%	100KHz	5.06	0.15
MTPO1608-681□	680 \pm 20%	100KHz	9.20	0.12
MTPO1608-102□	1000 \pm 20%	100KHz	13.80	0.07

□ Tolerance : J = \pm 5% , K = \pm 10% , L = \pm 15% , M = \pm 20% , N = \pm 30%



SMD Power Inductors

MTPO Series

Electrical Characteristics

MTPO 1608S

Part number	Inductance (μ H)	Test Frequency	DC Resistance (Ω) MAX.	Rated Current (A) MAX.
MTPO1608S-1R0□	1.0 \pm 20%	100KHz	0.040	1.20
MTPO1608S-1R5□	1.5 \pm 20%	100KHz	0.045	1.00
MTPO1608S-2R2□	2.2 \pm 20%	100KHz	0.050	0.80
MTPO1608S-3R3□	3.3 \pm 20%	100KHz	0.055	0.75
MTPO1608S-4R7□	4.7 \pm 20%	100KHz	0.060	0.70
MTPO1608S-6R8□	6.8 \pm 20%	100KHz	0.065	0.60
MTPO1608S-100□	10 \pm 20%	100KHz	0.075	0.40
MTPO1608S-150□	15 \pm 20%	100KHz	0.090	0.35
MTPO1608S-220□	22 \pm 20%	100KHz	0.110	0.30
MTPO1608S-330□	33 \pm 20%	100KHz	0.190	0.25
MTPO1608S-470□	47 \pm 20%	100KHz	0.230	0.20
MTPO1608S-680□	68 \pm 20%	100KHz	0.290	0.15
MTPO1608S-101□	100 \pm 20%	100KHz	0.480	0.10
MTPO1608S-151□	150 \pm 20%	100KHz	0.590	0.08
MTPO1608S-221□	220 \pm 20%	100KHz	0.770	0.065
MTPO1608S-331□	330 \pm 20%	100KHz	1.40	0.045
MTPO1608S-471□	470 \pm 20%	100KHz	1.80	0.040
MTPO1608S-681□	680 \pm 20%	100KHz	2.20	0.030
MTPO1608S-102□	1000 \pm 20%	100KHz	3.40	0.028
MTPO1608S-152□	1500 \pm 20%	100KHz	4.20	0.026
MTPO1608S-222□	2200 \pm 20%	100KHz	8.50	0.023
MTPO1608S-332□	3300 \pm 20%	100KHz	11.00	0.020
MTPO1608S-472□	4700 \pm 20%	100KHz	13.90	0.018
MTPO1608S-682□	6800 \pm 20%	100KHz	25.00	0.012
MTPO1608S-103□	10000 \pm 20%	100KHz	32.80	0.005

□ Tolerance : J = \pm 5% , K = \pm 10% , L = \pm 15% , M = \pm 20% , N = \pm 30%



SMD Power Inductors

MTPO Series

Electrical Characteristics

MTPO 3308

Part number	Inductance (μ H)	Test Frequency	DC Resistance (Ω) MAX.	Rated Current (A) MAX.
MTPO3308-100□	10 \pm 20%	100KHz	0.11	2.00
MTPO3308-150□	15 \pm 20%	100KHz	0.15	1.50
MTPO3308-220□	22 \pm 20%	100KHz	0.23	1.30
MTPO3308-330□	33 \pm 20%	100KHz	0.30	1.10
MTPO3308-470□	47 \pm 20%	100KHz	0.39	0.80
MTPO3308-680□	68 \pm 20%	100KHz	0.66	0.70
MTPO3308-101□	100 \pm 20%	100KHz	0.84	0.60
MTPO3308-151□	150 \pm 20%	100KHz	1.20	0.50
MTPO3308-221□	220 \pm 20%	100KHz	1.90	0.40
MTPO3308-331□	330 \pm 20%	100KHz	2.70	0.30
MTPO3308-471□	470 \pm 20%	100KHz	4.00	0.20
MTPO3308-681□	680 \pm 20%	100KHz	5.30	0.10
MTPO3308-102□	1000 \pm 20%	100KHz	8.40	0.05

□ Tolerance : J = \pm 5% , K = \pm 10% , L = \pm 15% , M = \pm 20% , N = \pm 30%



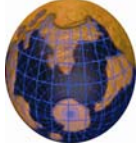
SMD Power Inductors MTPO Series

Electrical Characteristics

MTPO 3316

Part number	Inductance (μ H)	Test Frequency	DC Resistance (Ω) MAX.	Rated Current (A) MAX.
MTPO3316-1R0□	1.0 \pm 20%	100KHz	0.009	6.8
MTPO3316-1R5□	1.5 \pm 20%	100KHz	0.010	6.4
MTPO3316-2R2□	2.2 \pm 20%	100KHz	0.012	6.1
MTPO3316-3R3□	3.3 \pm 20%	100KHz	0.015	5.4
MTPO3316-4R7□	4.7 \pm 20%	100KHz	0.018	4.8
MTPO3316-6R8□	6.8 \pm 20%	100KHz	0.027	4.4
MTPO3316-100□	10 \pm 20%	100KHz	0.038	3.9
MTPO3316-150□	15 \pm 20%	100KHz	0.046	3.1
MTPO3316-220□	22 \pm 20%	100KHz	0.085	2.7
MTPO3316-270□	27 \pm 20%	100KHz	0.094	2.5
MTPO3316-330□	33 \pm 20%	100KHz	0.100	2.1
MTPO3316-470□	47 \pm 20%	100KHz	0.140	1.8
MTPO3316-680□	68 \pm 20%	100KHz	0.200	1.5
MTPO3316-101□	100 \pm 20%	100KHz	0.280	1.3
MTPO3316-151□	150 \pm 20%	100KHz	0.400	1.0
MTPO3316-181□	180 \pm 20%	100KHz	0.550	0.9
MTPO3316-221□	220 \pm 20%	100KHz	0.610	0.8
MTPO3316-331□	330 \pm 20%	100KHz	1.020	0.6
MTPO3316-471□	470 \pm 20%	100KHz	1.270	0.5
MTPO3316-681□	680 \pm 20%	100KHz	2.020	0.4
MTPO3316-102□	1000 \pm 20%	100KHz	3.000	0.3

□ Tolerance : J = \pm 5% , K = \pm 10% , L = \pm 15% , M = \pm 20% , N = \pm 30%



SMD Power Inductors

MTPO Series

Electrical Characteristics

MTPO 3316S

Part number	Inductance (μ H)	Test Frequency	DC Resistance (Ω) MAX.	Rated Current (A) MAX.
MTPO3316S-1R0□	1.0 \pm 20%	100KHz	0.021	5.0
MTPO3316S-1R5□	1.5 \pm 20%	100KHz	0.022	4.5
MTPO3316S-2R2□	2.2 \pm 20%	100KHz	0.032	3.8
MTPO3316S-3R3□	3.3 \pm 20%	100KHz	0.039	3.3
MTPO3316S-4R7□	4.7 \pm 20%	100KHz	0.054	2.7
MTPO3316S-6R8□	6.8 \pm 20%	100KHz	0.075	2.2
MTPO3316S-100□	10 \pm 20%	100KHz	0.101	2.0
MTPO3316S-150□	15 \pm 20%	100KHz	0.150	1.5
MTPO3316S-220□	22 \pm 20%	100KHz	0.207	1.3
MTPO3316S-330□	33 \pm 20%	100KHz	0.334	1.1
MTPO3316S-470□	47 \pm 20%	100KHz	0.472	0.8
MTPO3316S-102□	1000 \pm 20%	100KHz	6.880	0.3

□ Tolerance : J = \pm 5% , K = \pm 10% , L = \pm 15% , M = \pm 20% , N = \pm 30%



SMD Power Inductors

MTPO Series

Electrical Characteristics

MTPO 3340

Part number	Inductance (μ H)	Test Frequency	DC Resistance (Ω) MAX.	Rated Current (A) MAX.
MTPO3340-1R0□	1.0 \pm 20%	100KHz	0.012	20.0
MTPO3340-3R9□	3.9 \pm 20%	100KHz	0.021	16.0
MTPO3340-4R7□	4.7 \pm 20%	100KHz	0.018	10.0
MTPO3340-100□	10 \pm 20%	100KHz	0.033	3.5
MTPO3340-150□	15 \pm 20%	100KHz	0.042	3.0
MTPO3340-220□	22 \pm 20%	100KHz	0.054	2.5
MTPO3340-330□	33 \pm 20%	100KHz	0.080	2.0
MTPO3340-470□	47 \pm 20%	100KHz	0.100	1.6
MTPO3340-680□	68 \pm 20%	100KHz	0.170	1.2
MTPO3340-101□	100 \pm 20%	100KHz	0.220	1.1
MTPO3340-151□	150 \pm 20%	100KHz	0.340	0.9
MTPO3340-221□	220 \pm 20%	100KHz	0.440	0.7
MTPO3340-331□	330 \pm 20%	100KHz	0.700	0.6
MTPO3340-471□	470 \pm 20%	100KHz	0.950	0.3
MTPO3340-681□	680 \pm 20%	100KHz	1.200	0.2
MTPO3340-102□	1000 \pm 20%	100KHz	2.000	0.1

□ Tolerance : J = \pm 5% , K = \pm 10% , L = \pm 15% , M = \pm 20% , N = \pm 30%



SMD Power Inductors MTPO Series

Electrical Characteristics

MTPO 5022

Part number	Inductance (μ H)	Test Frequency	DC Resistance (Ω) MAX.	Rated Current (A) MAX.
MTPO5022-1R0□	1.0 \pm 20%	100KHz	0.011	8.60
MTPO5022-2R2□	2.2 \pm 20%	100KHz	0.014	7.10
MTPO5022-3R3□	3.3 \pm 20%	100KHz	0.016	6.20
MTPO5022-4R7□	4.7 \pm 20%	100KHz	0.019	5.80
MTPO5022-5R6□	5.6 \pm 20%	100KHz	0.022	5.30
MTPO5022-100□	10 \pm 20%	100KHz	0.032	4.30
MTPO5022-150□	15 \pm 20%	100KHz	0.036	4.00
MTPO5022-220□	22 \pm 20%	100KHz	0.047	3.50
MTPO5022-270□	27 \pm 20%	100KHz	0.057	3.20
MTPO5022-330□	33 \pm 20%	100KHz	0.066	3.00
MTPO5022-470□	47 \pm 20%	100KHz	0.087	2.60
MTPO5022-680□	68 \pm 20%	100KHz	0.130	2.30
MTPO5022-101□	100 \pm 20%	100KHz	0.190	1.80
MTPO5022-151□	150 \pm 20%	100KHz	0.250	1.50
MTPO5022-221□	220 \pm 20%	100KHz	0.380	1.20
MTPO5022-331□	330 \pm 20%	100KHz	0.560	1.00
MTPO5022-471□	470 \pm 20%	100KHz	0.850	0.82
MTPO5022-681□	680 \pm 20%	100KHz	1.200	0.72
MTPO5022-102□	1000 \pm 20%	100KHz	1.800	0.56
MTPO5022-472□	4700 \pm 20%	100KHz	11.00	0.50

□ Tolerance : J = \pm 5% , K = \pm 10% , L = \pm 15% , M = \pm 20% , N = \pm 30%



SMD Power Inductors

MTPO Series

Electrical Characteristics

MTPO 5022S

Part number	Inductance (μ H)	Test Frequency	DC Resistance (Ω) MAX.	Rated Current (A) MAX.
MTPO5022S-100□	10 \pm 20%	100KHz	0.040	3.9
MTPO5022S-150□	15 \pm 20%	100KHz	0.048	3.4
MTPO5022S-220□	22 \pm 20%	100KHz	0.059	3.1
MTPO5022S-330□	33 \pm 20%	100KHz	0.075	2.8
MTPO5022S-470□	47 \pm 20%	100KHz	0.097	2.4
MTPO5022S-680□	68 \pm 20%	100KHz	0.138	2.0
MTPO5022S-101□	100 \pm 20%	100KHz	0.207	1.7
MTPO5022S-151□	150 \pm 20%	100KHz	0.293	1.3
MTPO5022S-221□	220 \pm 20%	100KHz	0.47	1.1
MTPO5022S-331□	330 \pm 20%	100KHz	0.78	0.86
MTPO5022S-471□	470 \pm 20%	100KHz	1.08	0.73
MTPO5022S-681□	680 \pm 20%	100KHz	1.40	0.64
MTPO5022S-102□	1000 \pm 20%	100KHz	2.01	0.53

□ Tolerance : J = \pm 5% , K = \pm 10% , L = \pm 15% , M = \pm 20% , N = \pm 30%