



SMD Power Inductors MTDC-D Series

Features

- * Low profile and small size
- * Low DC resistance
- * Tape and reel packaging available
- * Digital cameras, CD players, cellular phones and PDA

Applications

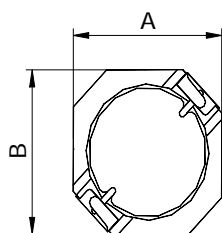
- * Portable communication equipment
- * Notebook PC, digital camera, LCD television set
- * Power supply for VTR, OA equipment
- * DC / DC converters

Product Identifications

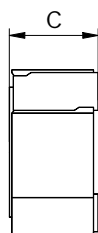
MTDC □□□□ - □□□ □
(1) (2) (3) (4)

- (1) Type
- (2) Dimensions
- (3) Inductance
- (4) Tolerance

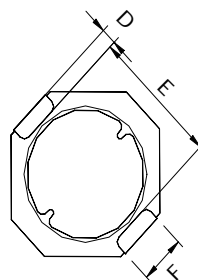
Shapes and Dimensions



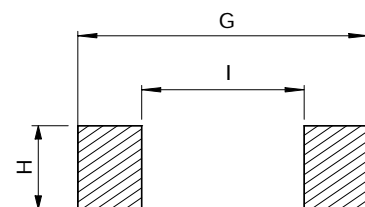
TOP VIEW



SIDE VIEW



BOTTOM VIEW



Land Pattern:



SMD Power Inductors

MTDC-D Series

TYPE	A	B	C	D	E	F	G	H	I
MTDC5D20	5.2MAX	5.2MAX	2.0MAX	0.6	4.20	1.40	5.80	2.0	4.2
MTDC5D30	5.2MAX	5.2MAX	3.0MAX	0.6	4.20	1.40	5.80	2.0	4.2

Electrical Characteristics

MTDC 5D20

Part number	Inductance (μH)	Test Frequency	DC Resistance (Ω) MAX.	Rated Current (A) MAX.
MTDC5D20-R47□	0.47 \pm 20%	100KHz	0.015	4.00
MTDC5D20-1R2□	1.2 \pm 20%	100KHz	0.032	2.55
MTDC5D20-1R5□	1.5 \pm 20%	100KHz	0.042	2.15
MTDC5D20-2R2□	2.2 \pm 20%	100KHz	0.049	1.87
MTDC5D20-3R3□	3.3 \pm 20%	100KHz	0.070	1.47
MTDC5D20-4R7□	4.7 \pm 20%	100KHz	0.083	1.33
MTDC5D20-6R2□	6.2 \pm 20%	100KHz	0.098	1.12
MTDC5D20-8R2□	8.2 \pm 20%	100KHz	0.120	0.97
MTDC5D20-10□	10 \pm 20%	100KHz	0.150	0.76
MTDC5D20-15□	15 \pm 20%	100KHz	0.230	0.72
MTDC5D20-22□	22 \pm 20%	100KHz	0.305	0.596
MTDC5D20-33□	33 \pm 20%	100KHz	0.455	0.44
MTDC5D20-47□	47 \pm 20%	100KHz	0.712	0.406
MTDC5D20-68□	68 \pm 20%	100KHz	1.066	0.34
MTDC5D20-82□	82 \pm 20%	100KHz	1.243	0.308
MTDC5D20-101□	100 \pm 20%	100KHz	1.938	0.283
MTDC5D20-151□	150 \pm 20%	100KHz	3.200	0.228
MTDC5D20-221□	220 \pm 20%	100KHz	3.500	0.188
MTDC5D20-331□	330 \pm 20%	100KHz	5.25	0.155
MTDC5D20-471□	470 \pm 20%	100KHz	8.88	0.129
MTDC5D20-681□	680 \pm 20%	100KHz	11.08	0.107
MTDC5D20-821□	820 \pm 20%	100KHz	13.25	0.098
MTDC5D20-102□	1000 \pm 20%	100KHz	15.50	0.088

□ Tolerance : J = \pm 5% , K = \pm 10% , L = \pm 15% , M = \pm 20% , N = \pm 30%



SMD Power Inductors MTDC-D Series

Electrical Characteristics

MTDC 5D30

Part number	Inductance (μ H)	Test Frequency	DC Resistance (Ω) MAX.	Rated Current (A) MAX.
MTDC5D30-1R1□	1.1 \pm 20%	100KHz	0.020	3.87
MTDC5D30-2R0□	2.0 \pm 20%	100KHz	0.027	2.92
MTDC5D30-3R3□	3.3 \pm 20%	100KHz	0.034	2.36
MTDC5D30-4R7□	4.7 \pm 20%	100KHz	0.045	1.87
MTDC5D30-6R8□	6.8 \pm 20%	100KHz	0.068	1.51
MTDC5D30-100□	10 \pm 20%	100KHz	0.090	1.33
MTDC5D30-150□	15 \pm 20%	100KHz	0.142	1.05
MTDC5D30-220□	22 \pm 20%	100KHz	0.208	0.86
MTDC5D30-330□	33 \pm 20%	100KHz	0.257	0.72
MTDC5D30-470□	47 \pm 20%	100KHz	0.352	0.62
MTDC5D30-680□	68 \pm 20%	100KHz	0.525	0.51
MTDC5D30-101□	100 \pm 20%	100KHz	0.801	0.43

□ Tolerance : J = \pm 5% , K = \pm 10% , L = \pm 15% , M = \pm 20% , N = \pm 30%